

Plans and drawings relevant to reports submitted to Western Area Planning Committee

Wednesday 6th April 2022 at 6.30pm

**At Council Chamber, Council Offices, Market Street,
Newbury, RG14 5LD**

And via Zoom

[to be read in conjunction with the main agenda]

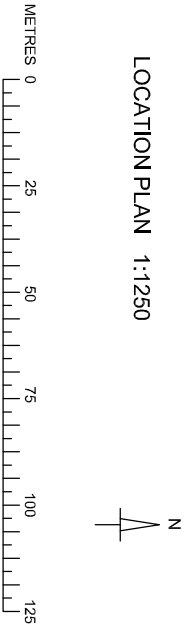
Please note:

- *All drawings are copied at A4 and consequently are not scalable*
- *Most relevant plans have been included – however, in some cases, it may be necessary for the case officer to make a selection*
- *All drawings are available to view at www.westberks.gov.uk*

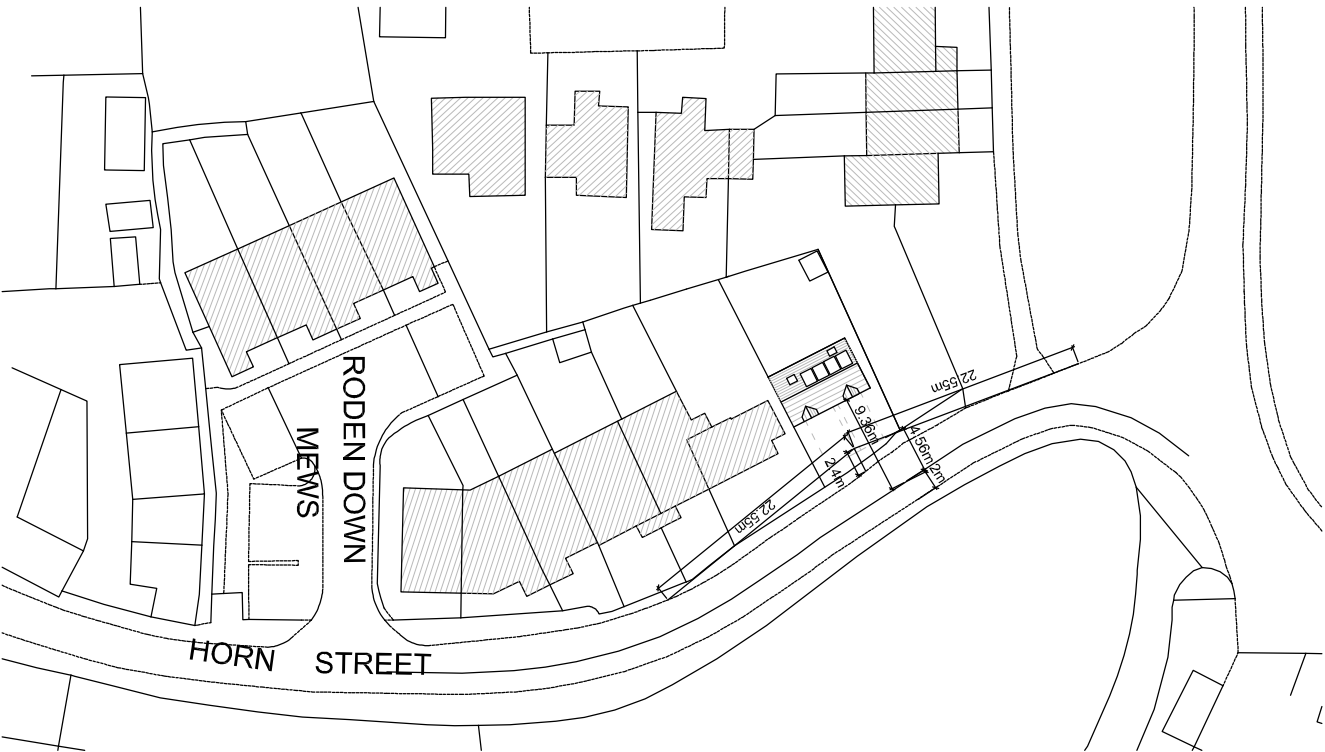
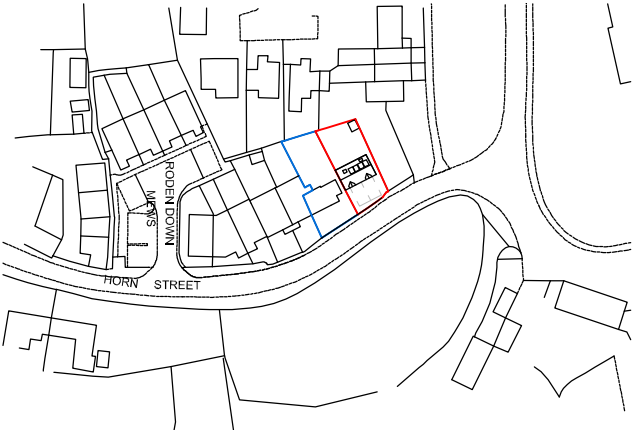


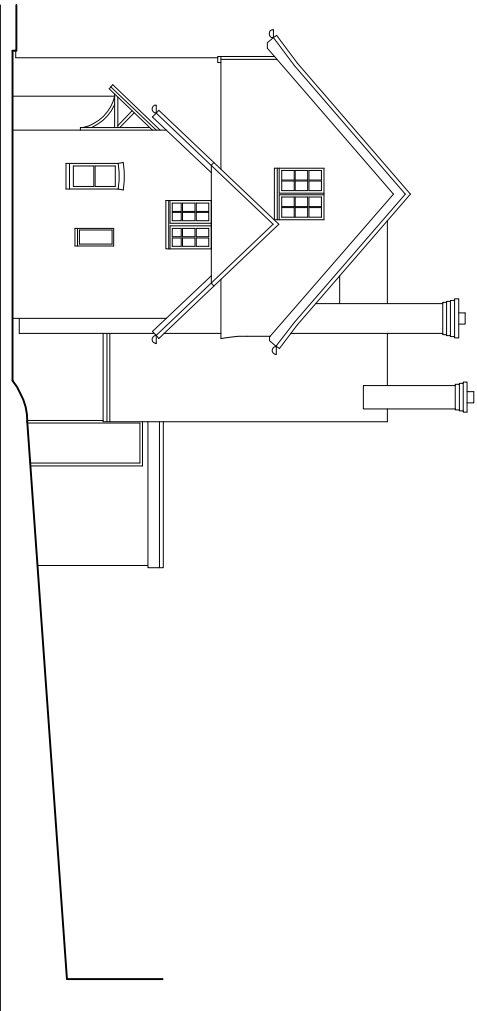
WestBerkshire
C O U N C I L

21/02271/FULD
Land North Of 31
Horn Street
Compton

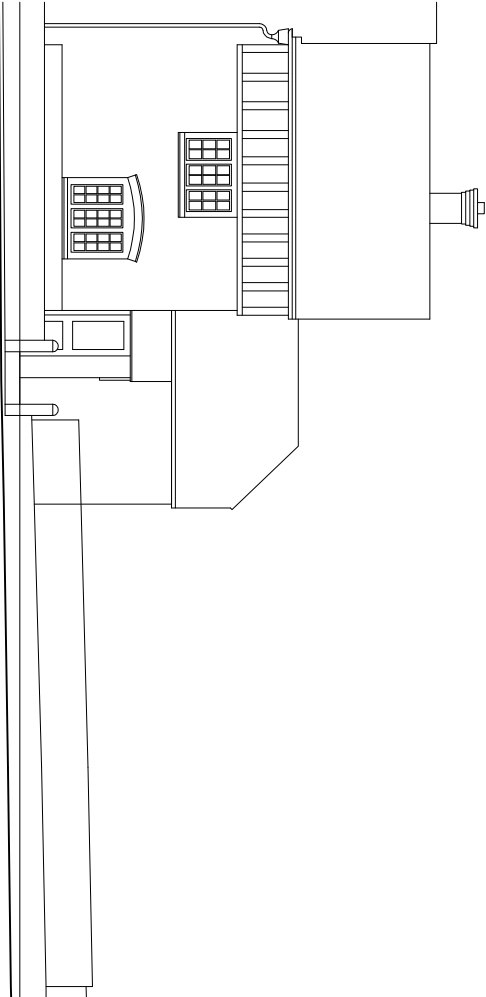


Ordnance Survey (c) Crown Copyright 2020. All rights reserved. Licence number 1000224232

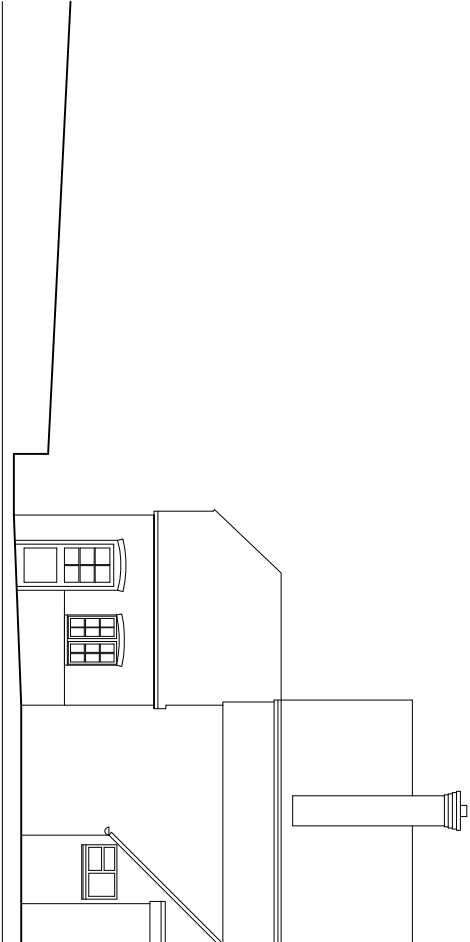




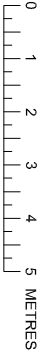
NORTH ELEVATION



EAST ELEVATION

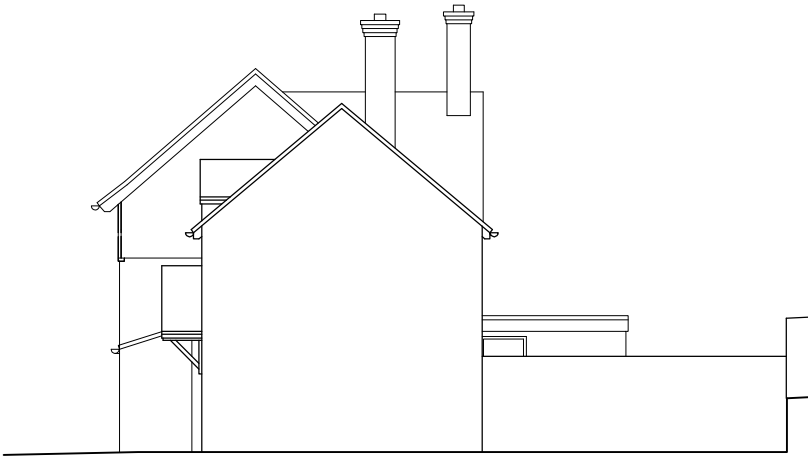


WEST ELEVATION

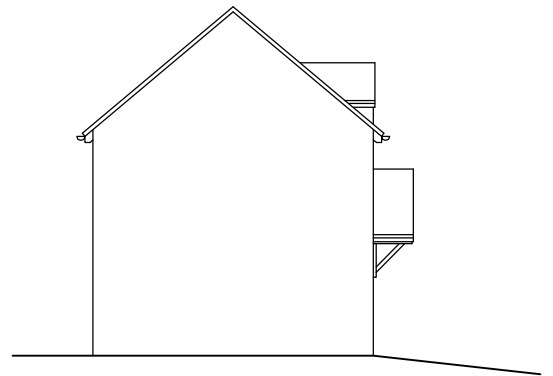




EAST ELEVATION



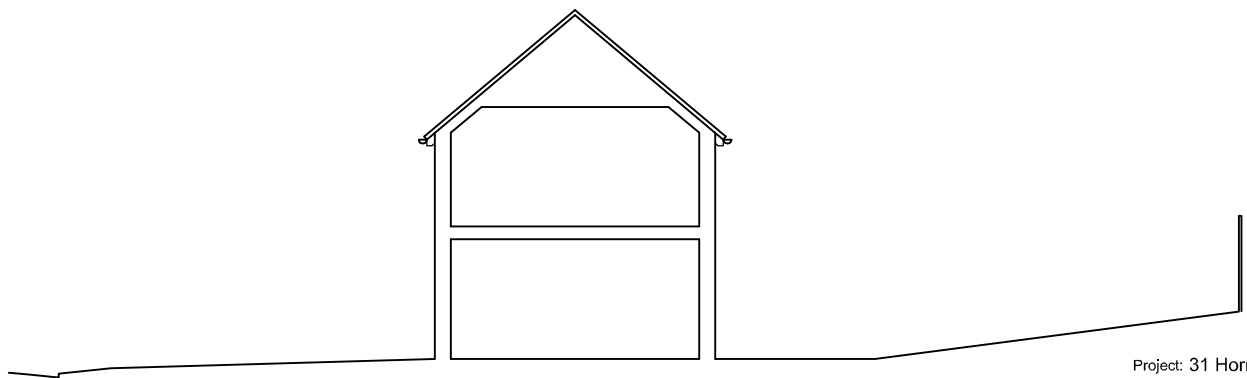
NORTH ELEVATION



SOUTH ELEVATION



WEST ELEVATION



SECTION A - A

Project: 31 Horn Street New
House Compton

Dwg Name	Scale	Size
Proposed Elevations	1:100	A3

Dwg No: **HSNHC/05F**

Dwg No: **HSNHC/05F**

0 1 2 3 4 5 METRES

